

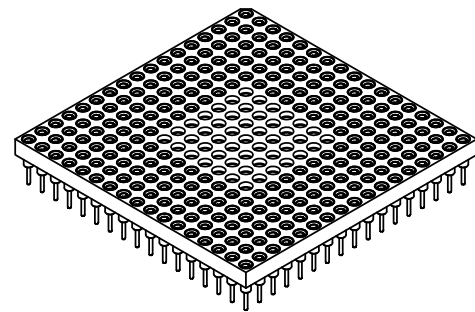
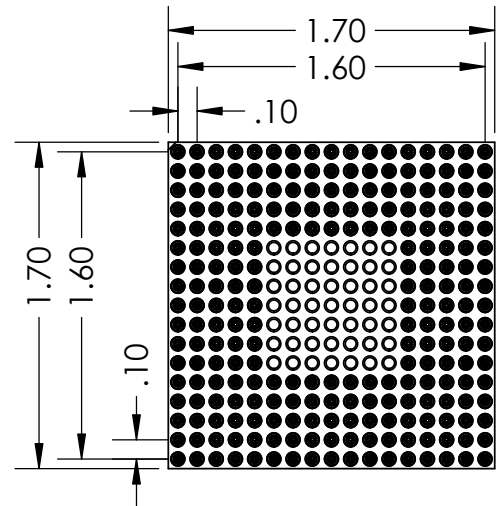
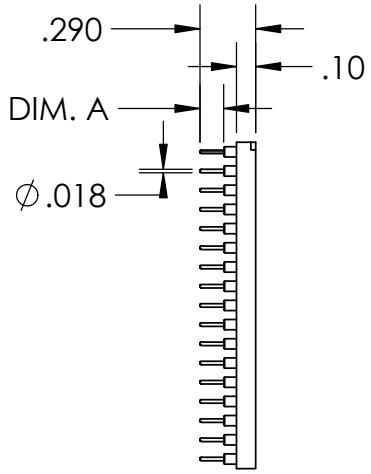
2

1

| PART NUMBER     | DIM. A |
|-----------------|--------|
| PS240A-0131GG-P | .125"  |
| PS240A-0132GG-P | .180"  |
| PS240A-0133GG-P | .215"  |

| REVISIONS |                 |           |
|-----------|-----------------|-----------|
| REV.      | DESCRIPTION     | DATE      |
| A         | INITIAL RELEASE | 9/23/2020 |

B




B

A

- NOTE:
- INSULATOR MATERIAL: GLASS FILLED POLYESTER
  - FLAMABILITY RATING: UL94V-0
  - OPERATING TEMP: -55C TO +125C
  - ACCEPTS -.015-.021 DIAMETER PIN
  - SHELL MATERIAL: BRASS ALLOY C36000, 1/2 HARD
  - SHELL PLATING 10µ MIN. OVER NICKEL, 100µ MIN
  - CONTACT MATERIAL: BeCu
  - CONTACT PLATING: 10µ MIN. OVER NICKEL, 100µ MIN

**PROPRIETARY AND CONFIDENTIAL**  
 THE INFORMATION CONTAINED IN THIS DRAWING IS THE SOLE PROPERTY OF ADAPTERS-PLUS INC. ANY REPRODUCTION IN PART OR AS A WHOLE WITHOUT THE WRITTEN PERMISSION OF ADAPTERS-PLUS IS PROHIBITED.

|                                      |           |             |
|--------------------------------------|-----------|-------------|
| UNLESS OTHERWISE SPECIFIED:          | NAME      | DATE        |
| DIMENSIONS ARE IN INCHES             | DRAWN     | AM 09/23/20 |
| TOLERANCES:                          | CHECKED   | SB 09/23/20 |
| FRACTIONAL ± .1                      | ENG APPR. |             |
| ANGULAR: MACH ± .1                   | MFG APPR. |             |
| TWO PLACE DECIMAL ± .01              | Q.A.      |             |
| THREE PLACE DECIMAL ± .005           | COMMENTS: |             |
| INTERPRET GEOMETRIC TOLERANCING PER: |           |             |
| MATERIAL                             |           |             |
| FINISH                               |           |             |
| DO NOT SCALE DRAWING                 |           |             |

|  |                                    |                        |
|--|------------------------------------|------------------------|
|  <b>Adapters-Plus Inc.</b><br>Ph: 209-839-0200<br>web: www.adapt-plus.com |                                    |                        |
| <b>TITLE:</b><br>240 PGA SOCKET<br>17 X 17 GRID  |                                    |                        |
| <b>SIZE</b><br><b>A</b>  | <b>DWG. NO.</b><br>PS240A-013XGG-P | <b>REV</b><br><b>A</b> |
| SCALE: 1:1   | WEIGHT:                            | SHEET 1 OF 1           |

A

2

1