

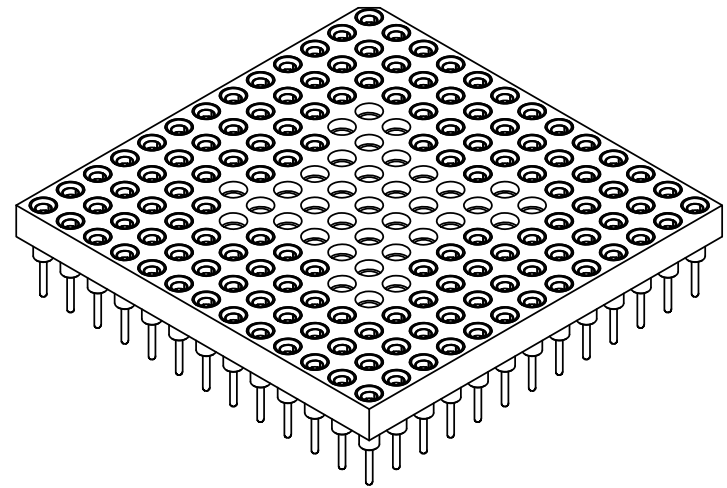
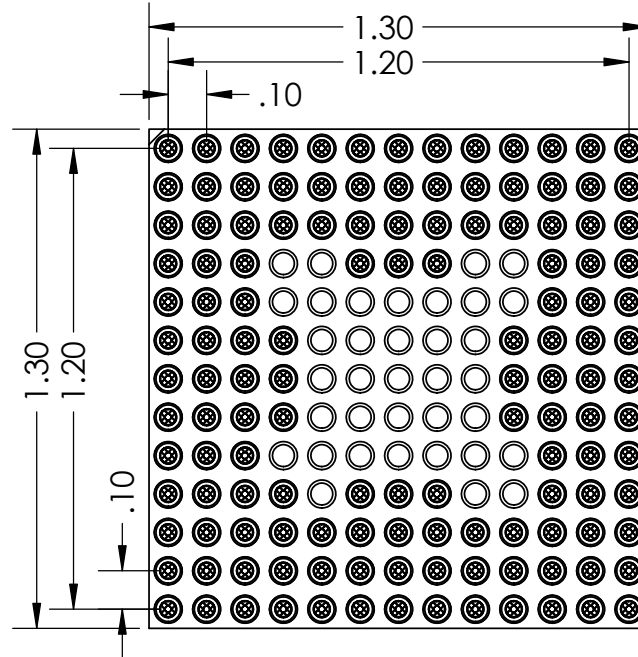
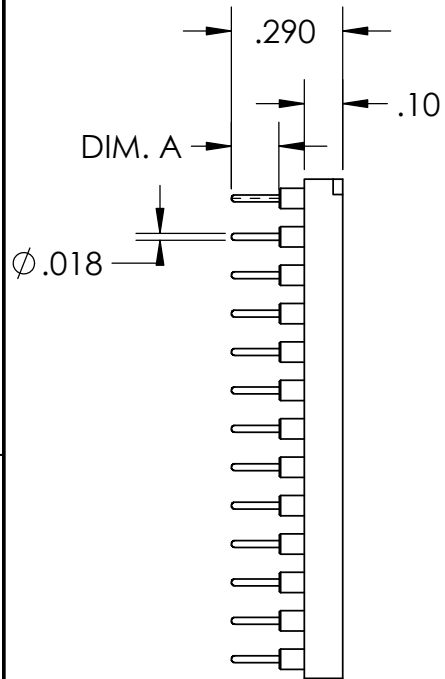
2

1

PRODUCT TABLE	DIM. A
PS133B-0131GG-P	.125"
PS133B-0132GG-P	.180"
PS133B-0133GG-P	.215"

REVISIONS		
REV.	DESCRIPTION	DATE
A	INITIAL RELEASE	9/18/2020

B




B

A

- NOTE:
1. INSULATOR MATERIAL: GLASS FILLED POLYESTER
 2. FLAMABILITY RATING: UL94V-0
 3. OPERATING TEMP: -55C TO +125C
 4. ACCEPTS -.015-.021 DIAMETER PIN
 5. SHELL MATERIAL: BRASS ALLOY C36000, 1/2 HARD
 6. SHELL PLATING 10µ MIN. OVER NICKEL, 100µ MIN
 7. CONTACT MATERIAL: BeCu
 8. CONTACT PLATING: 10µ MIN. OVER NICKEL, 100µ MIN

PROPRIETARY AND CONFIDENTIAL
 THE INFORMATION CONTAINED IN THIS DRAWING IS THE SOLE PROPERTY OF ADAPTERS-PLUS INC. ANY REPRODUCTION IN PART OR AS A WHOLE WITHOUT THE WRITTEN PERMISSION OF ADAPTERS-PLUS IS PROHIBITED.

UNLESS OTHERWISE SPECIFIED:	NAME	DATE
DIMENSIONS ARE IN INCHES	AM	09/18/20
TOLERANCES:	SB	09/18/20
FRACTIONAL ± .1	ENG APPR.	
ANGULAR: MACH ± .1	MFG APPR.	
TWO PLACE DECIMAL ± .01	Q.A.	
THREE PLACE DECIMAL ± .005	COMMENTS:	
INTERPRET GEOMETRIC TOLERANCING PER:		
MATERIAL		
FINISH		
DO NOT SCALE DRAWING		

 Adapters-Plus Inc. Ph: 209-839-0200 web: www.adapt-plus.com		
TITLE:		
133 PGA SOCKET 13X13 GRID		
SIZE	DWG. NO.	REV
A	PS133B-013XGG-P	A
SCALE: 2:1	WEIGHT:	SHEET 1 OF 1

A

2

1